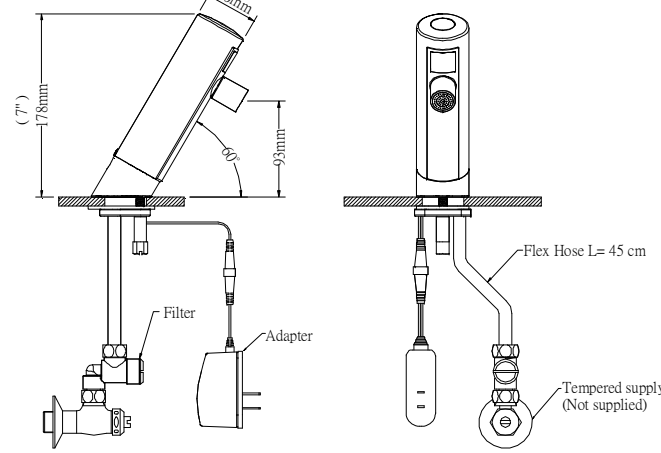


# Installation Instruction for AF323AC

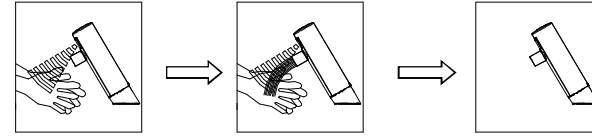
## Mounting Dimension



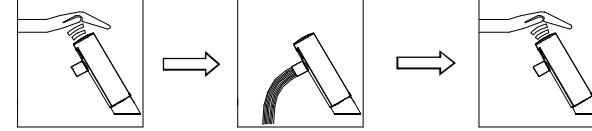
## Specification

<b>Model</b>	AF323AC
<b>Product</b>	Electronic Faucet
<b>Material of Casing</b>	Chrome-plated brass casting
<b>Power Apply</b>	AC110V~AC220V 50/60 Hz
<b>Power consumption</b>	5W below
<b>Sensory Range</b>	Automatic adjustment(5cm~20cm)
<b>Protection</b>	Automatic flow stop after 3 minute in case of a continuous abnormal flow
<b>Delay Time</b>	0.5 - 1.0 seconds
<b>Applicable Water Pressure</b>	10-100 PSI
<b>Flowing Volume</b>	8.3L/min below
<b>Applicable Water Temperature</b>	39°F~150°F (4°C ~ 65°C)
<b>Ceramic Bore Diameter</b>	28Φ~45Φ (single-hole basin or deck)

## Operation

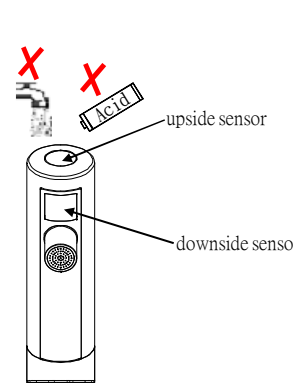


1. Keep hands under faucet for sensor detection. 2. Starts solenoid valve and flows immediately. 3. Stop flowing in 1 second after hands quit.



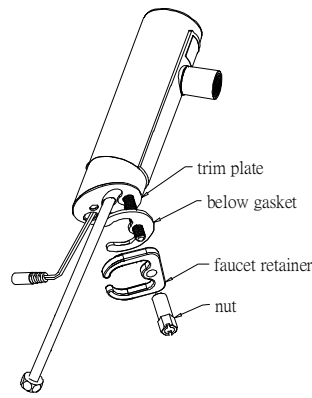
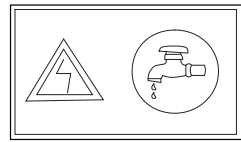
1. Hand approaches upside sensor(for 1 second) for sensor detection. 2. Starts solenoid valve and flows immediately. 3. Stop flowing when hand approaches upside sensor again.

## Caution

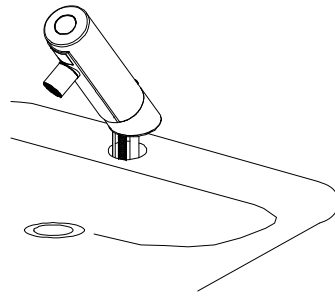


1. Keep the infrared window clean a all times.Dirt and dust on the infrared window can cause sensor failure.
2. Do not directly spray water or use strong acids to clean the casing as it ma result in short-circuiting or clean the casing when necessary.
3. Clean the filter regularly to avoid reduced water flow. This can be done as frequently as once every three months or as long as once every six months,depending on water quality.

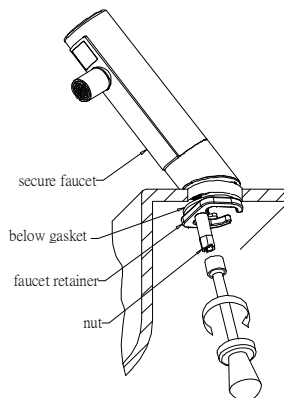
## Installation Steps



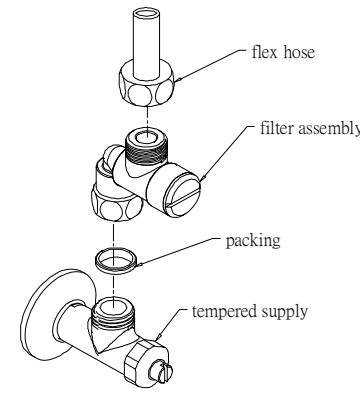
(1) Remove nut, faucet retainer and below gasket. (keep trim plate)



(2) Secure faucet and trim plate on the upside of lavatory or deck's hole.

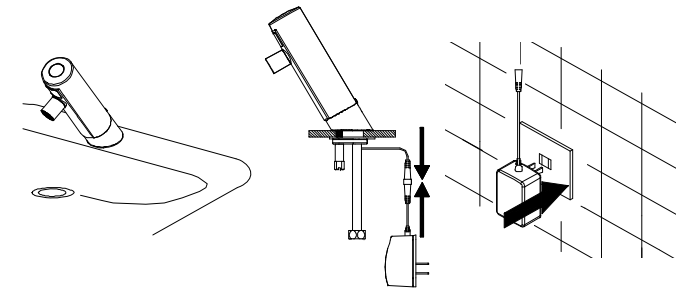


(3) Firmly secure faucet by tools on lavatory or deck.



(4) Turn on tempered supply to spout out dirty water with miscellaneous article.  
1. Firmly secure filter assembly by tools above tempered supply.  
2. Fasten flex hose onto outlet of filter assembly.

※Remind to secure filter assembly to avoid faucet's abnormal activation.



(5) Electrified and watered in accordance with following steps.  
1. Confirm no obstacle on basin,deck and faucet's infrared window.  
2. Connect adapter to faucet's power connector.  
3. Connect power adapter and electric socket, and do not approach infrared window within 3 seconds after faucet electrified.  
4. Turn on tempered supply and adjust to proper flow.

※Check electric power and water supply:  
· Clean miscellaneous article inside of water pipe to avoid obstruction and faucet failure.

· Affirm specification of electric power and faucet model to avoid inflammation.

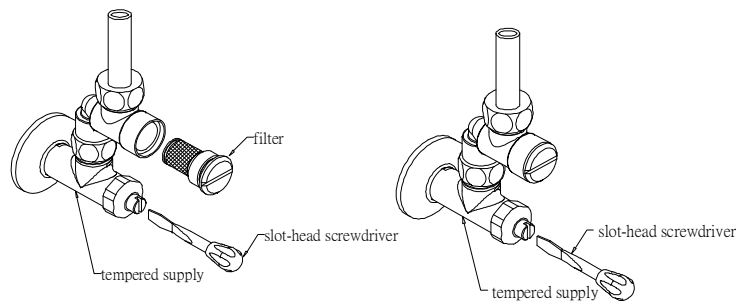
## Clean filter assembly and flow adjustment

## Temperature adjustment

## Sensory range adjustment (automatic adjustment)

## Troubleshooting

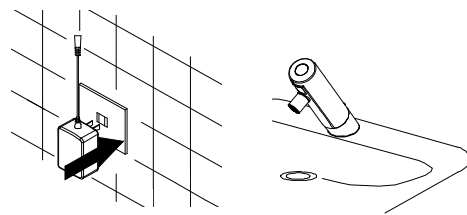
## Spare parts



1.Bad water quality resulted filter obstruction and flow decline. Turn off tempered supply by a slot-head screwdriver and take filter out for cleaning.

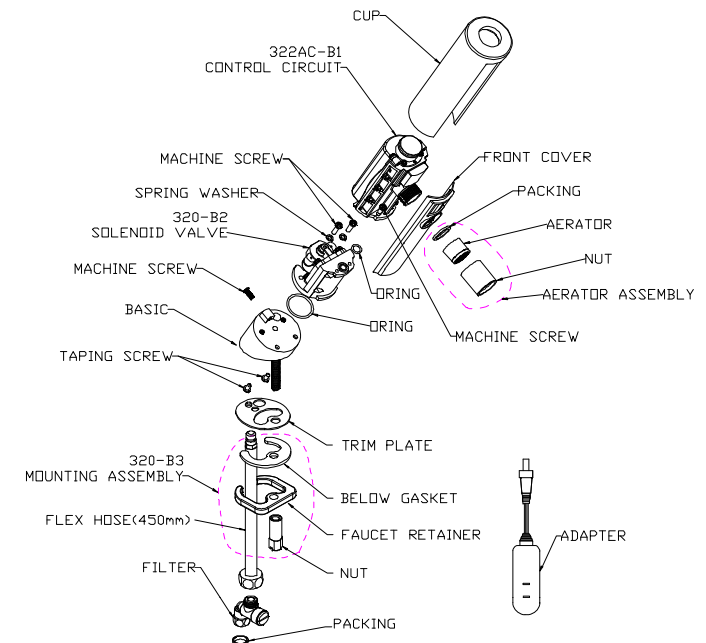
2.Adjust proper flow by a slot-head screwdriver.

Adjust required temperature by mixer as above chart.



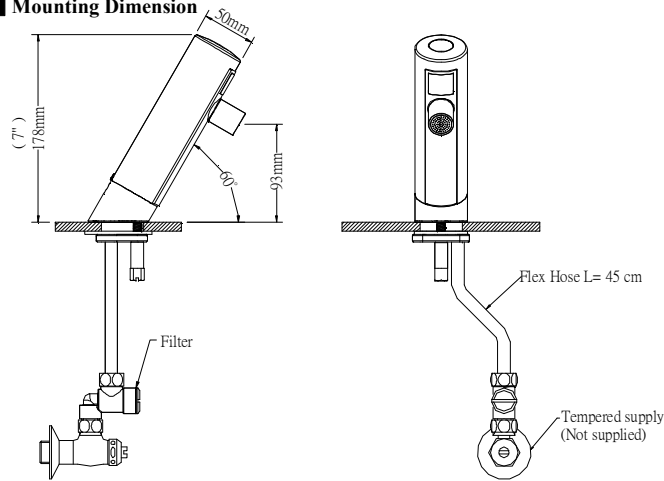
1. Remove power adapter from socket.  
2. Reconnect power adapter to socket after 10 seconds, do not approach basin or infrared window, an automatic adjustment of sensory range is completed  
3. Faucets completely works after turning on tempered supply.

Situation	Possible Cause	Solution
No function (LED flashes)	1.dirty infrared window	wipe infrared window with tissues
No function (No LED lighting when using)	1.dirty infrared window	wipe infrared window with tissues
	2.electric power not connected	check for power connection
	3.control circuit failure	replace control circuit
No function (LED keeps blinking when in use)	1.water supply is turned off	check for water supply
	2.solenoid valve connector is loose	reconnect its connector
	3.solenoid valve failure	replace solenoid valve
	4.control circuit failure	replace control circuit
Water continuously running	1.dirty infrared window	wipe infrared window with tissues
	2.sensor range is too long	re-adjust sensor range
	3.solenoid valve failure	replace solenoid valve or clean diaphragm
Low flow volume	1.low water supply	increase water supply
	2.filter obstructed	clean filter
	3.aerator obstructed	clean aerator
Water flows when not in use	1.dirty infrared window	wipe infrared window with tissues
	2.sensor range is too long	re-adjust sensor range



## Installation Instruction for AF323DC

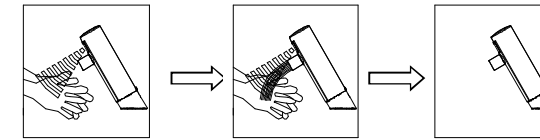
### Mounting Dimension



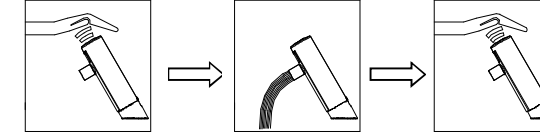
### Specification

Model	AF323DC
Product	Electronic Faucet
Material of casing	chrome-plated brass casting
Power Apply	Size AA Alkaline battery x 4pcs
Power Consumption	3W below
Sensory Range	Automatic adjustment(5cm~20cm)
Protection	Automatic flow stop after 3 minute in case of a continuous abnormal flow
Delay Time	0.5 - 1.0 seconds
Applicable water pressure	10-100 PSI
Flowing volume	8.3L/min below
Applicable water temperature	39°F~150°F (4°C ~ 65°C)
Ceramic Bore Diameter	28Φ~45Φ (single-hole basin or deck)

### Operation

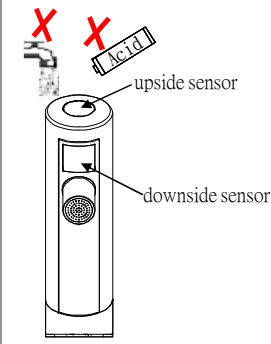


- 1.Keep hands under faucet for sensor detection.
- 2.Starts solenoid valve and flows immediately.
- 3.Stop flowing in 1 second after hands quit.



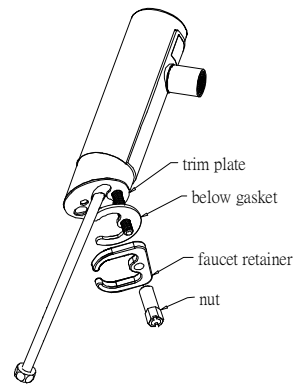
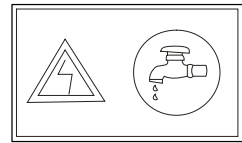
- 1.Hand approaches upside sensor(for 1 second) for sensor detection.
- 2.Starts solenoid valve and flows immediately.
- 3.Stop flowing when hand approaches upside sensor again.

### Caution

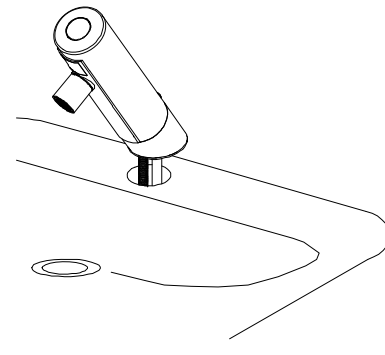


1. Keep the infrared window clean a all times.Dirt and dust on the infrared window can cause sensor failure.
2. Do not directly spray water or use strong acids to clean the casing as it ma result in short-circuiting or clean the casing when necessary.
3. Clean the filter regularly to avoid reduced water flow. This can be done as frequently as once every three months or as long as once every six months,depending on water quality.
4. The faucet applied for alkaline battery, replace new battery when LED flashes at the upside window.

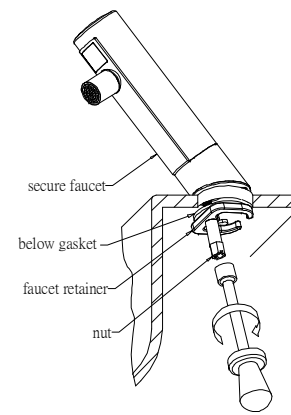
### Installation Steps



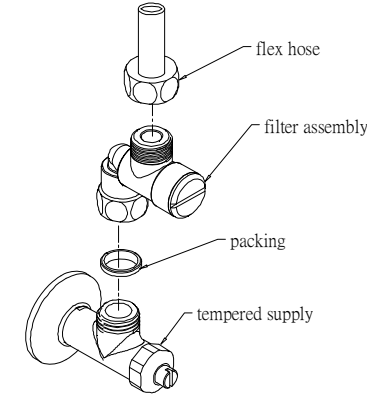
- (1) Remove nut, faucet retainer and below gasket. (keep trim plate)



- (2) Secure faucet and trim plate on the upside of lavatory or deck's hole.

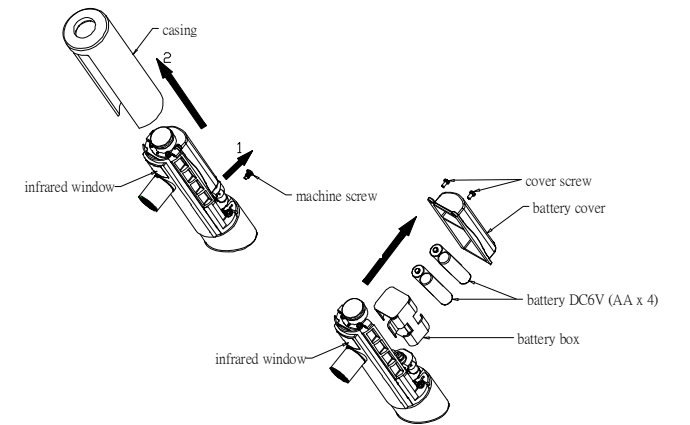


- (3) Firmly secure faucet by tools on lavatory or deck.



- (4) Turn on tempered supply to spout out dirty water with miscellaneous article.
  1. Firmly secure filter assembly by tools above tempered supply.
  2. Fasten flex hose onto outlet of filter assembly.

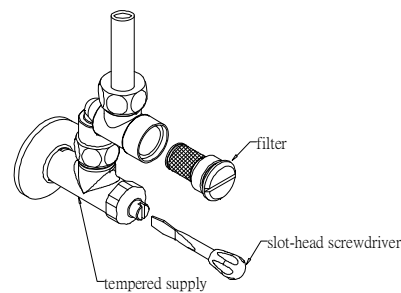
※Remind to secure filter assembly to avoid faucet's abnormal activation.



- (5) Remove casing and battery box in accordance with above charts.
  1. Confirm no obstacle on basin, deck and faucet's infrared window.
  2. Install battery DC1.5V AA x 4 accordingly, do not approach infrared window within 3 seconds to complete faucet electrified and sensory range adjustment.
  3. Secure battery box and casing in opposite sequence.
  4. Turn on tempered supply and adjust to proper flow.

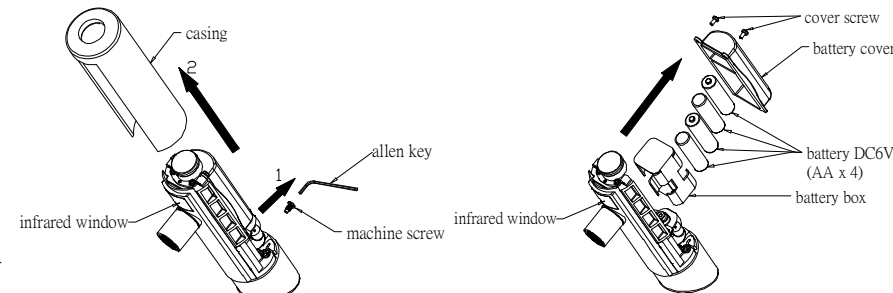
※Check electric power and water source  
· Clean miscellaneous article inside of water pipe to avoid obstruction and faucet failure.

### Clean filter and flow adjustment



1. Bad water quality resulted filter obstruction and flow decline. Turn off tempered supply by a slot-head screwdriver and take filter out for cleaning.
2. Adjust proper flow by a slot-head screwdriver.

### Battery replacement and sensory range adjustment(automatic adjustment)



#### Battery replacement

The faucet applied for alkaline battery, please replace new battery when LED flashes at the upside window indicator.

#### Procedure of battery replacement:

1. Remove fasten screws by an Allen key.
2. Remove casing and battery box in sequence.
3. Replace 4xDC1.5V(AA) Battery.
4. Secure 'battery' box and casing in opposite sequence.
5. Fasten screws by an Allen key.

#### Sensory range adjustment

- 1.Remove battery in accordance with procedure of replacement.
2. Reload battery at 2 minutes later, do not approach basin or lavatory within 3 seconds, automatic adjustment completed.
3. Faucet completely works after turning on tempered supply.

### Troubleshooting

Situation	Possible Cause	Solution
No function (LED flashes)	1.dirty infrared window 2.lower battery	wipe infrared window with tissues replace battery
No function (No LED flashes)	1.dirty infrared window 2.lower battery 3.control circuit failure	wipe infrared window by tissues replace battery replace circuit
No function (LED flashes when using)	1.water supply is turned off 2.solenoid valve connector is loose 3.solenoid valve failure 4.control circuit failure	check for water supply reconnect its connector replace solenoid valve replace control circuit
Water continuously running	1.dirty infrared window 2.sensor range is too long 3.solenoid valve failure	wipe infrared window by tissues re-adjust sensor range replace solenoid valve or clean diaphragm
Low flow volume	1.low water supply 2.filter obstructed 3.aerator obstructed	increase water supply clean filter clean aerator
Water flows when not in use	1.dirty infrared window 2.sensor range is too long	wipe infrared window by tissues re-adjust sensor range

### Spare parts

