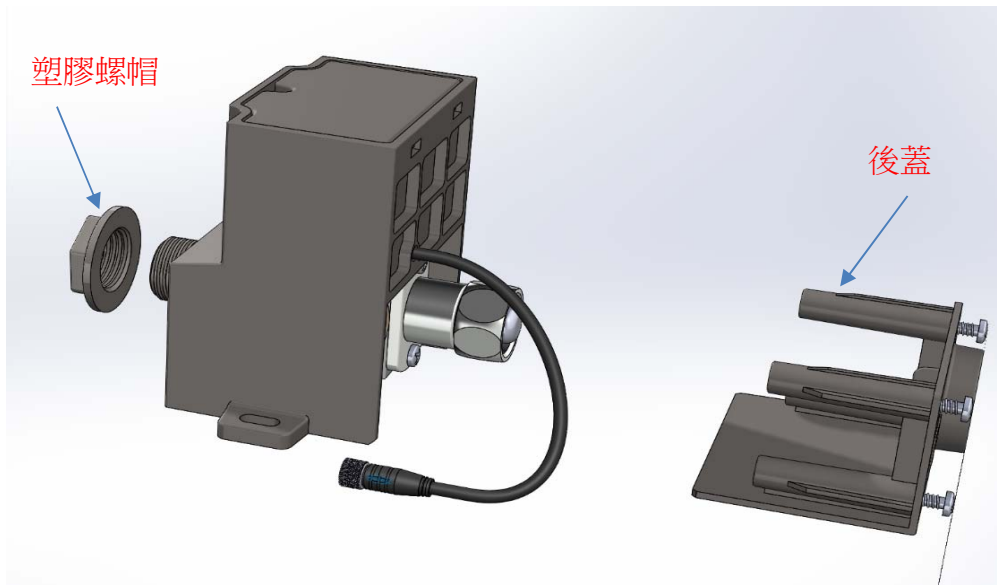


## 362DC-A1 電磁閥拆裝與維修

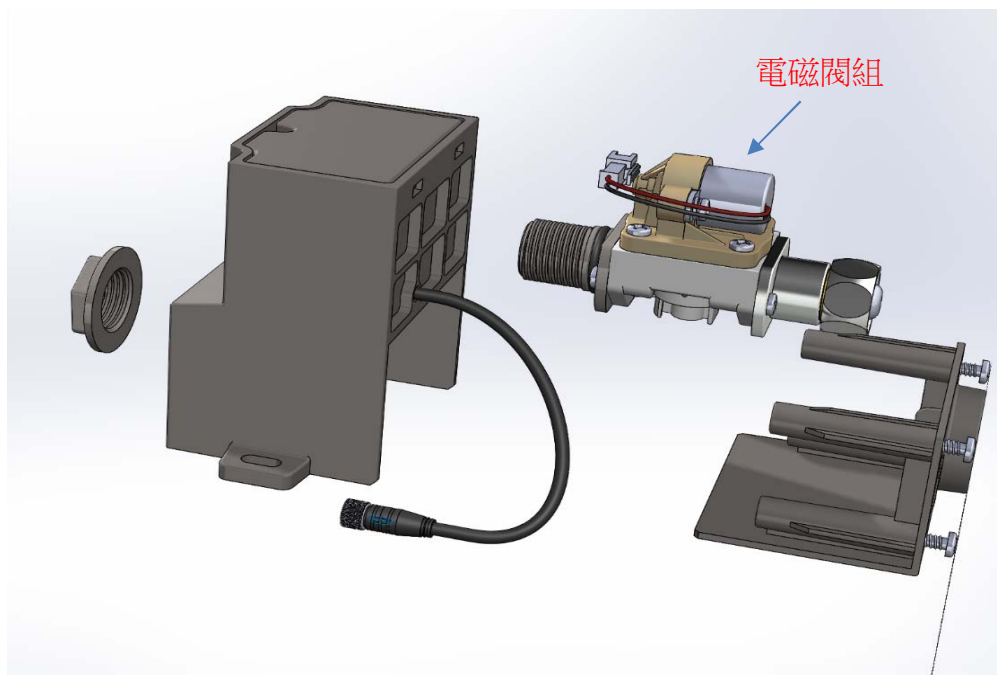


制定日期: 2022.01.11

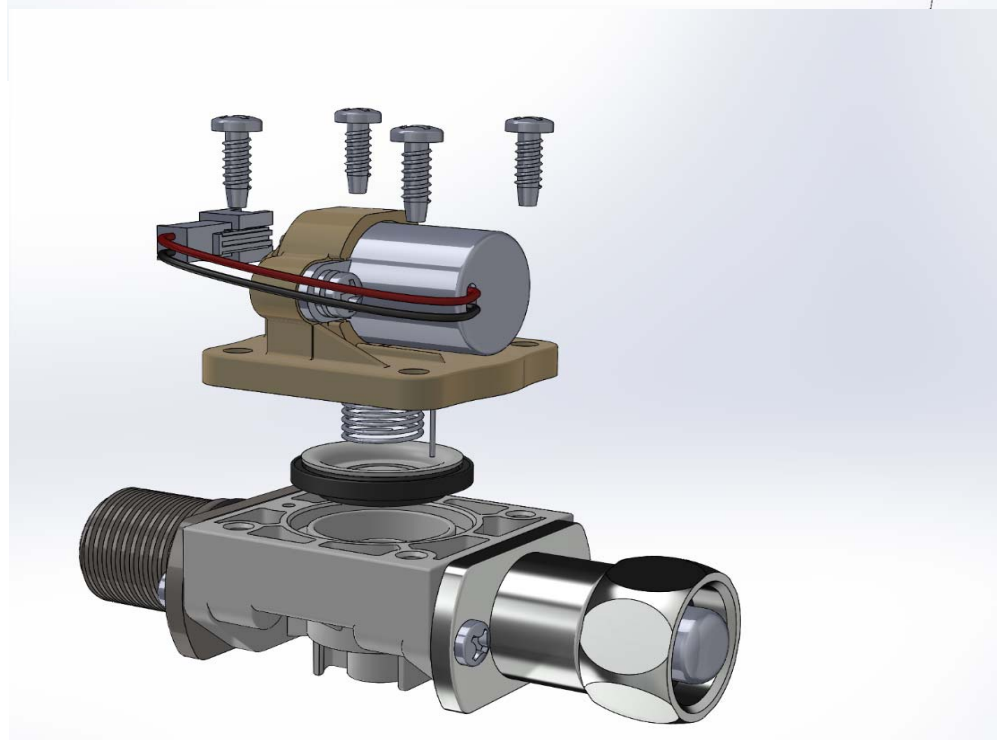
制定單位:永賀工程部



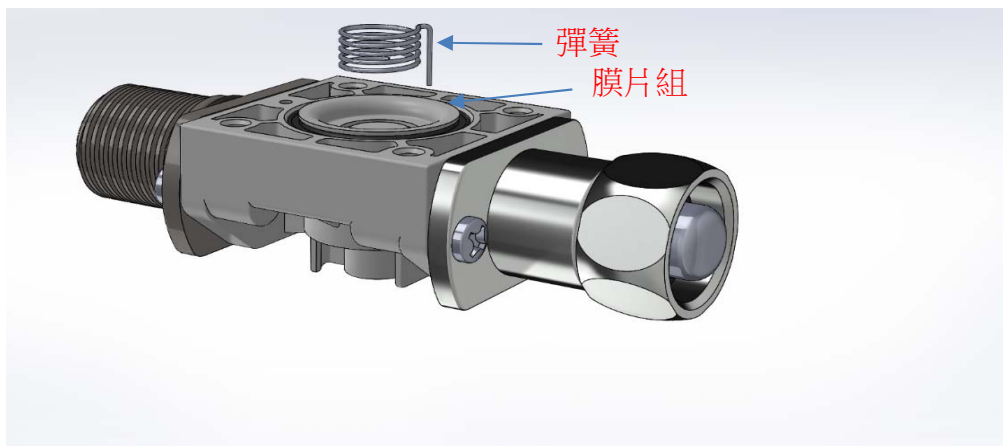
1. 拆下後蓋(四顆螺絲)
2. 旋下塑膠螺帽



取出電磁閥組



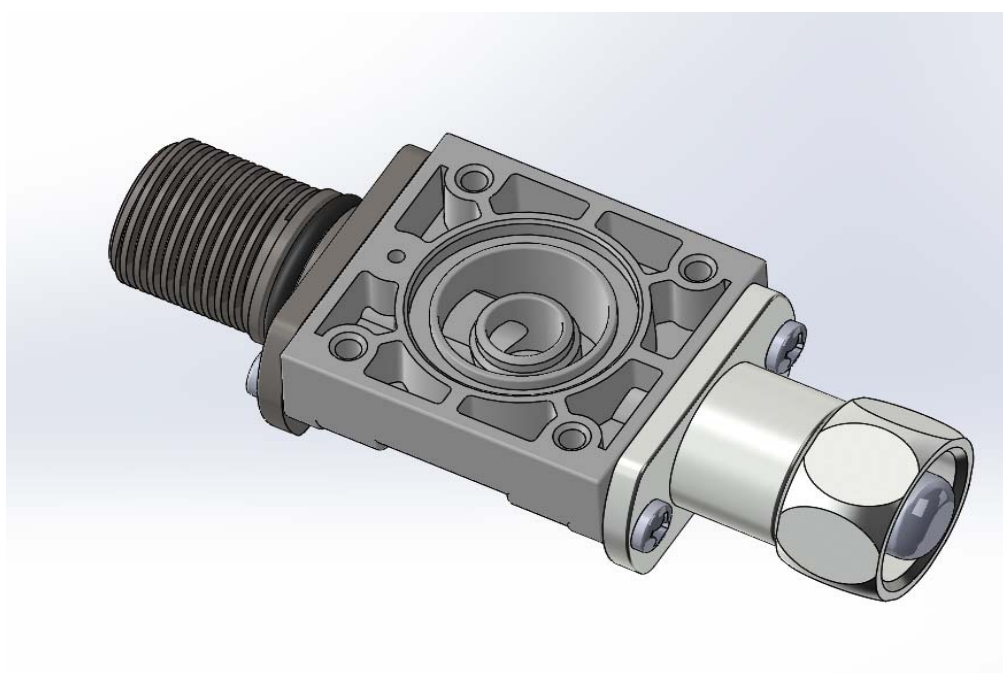
將上蓋四顆螺絲鬆開



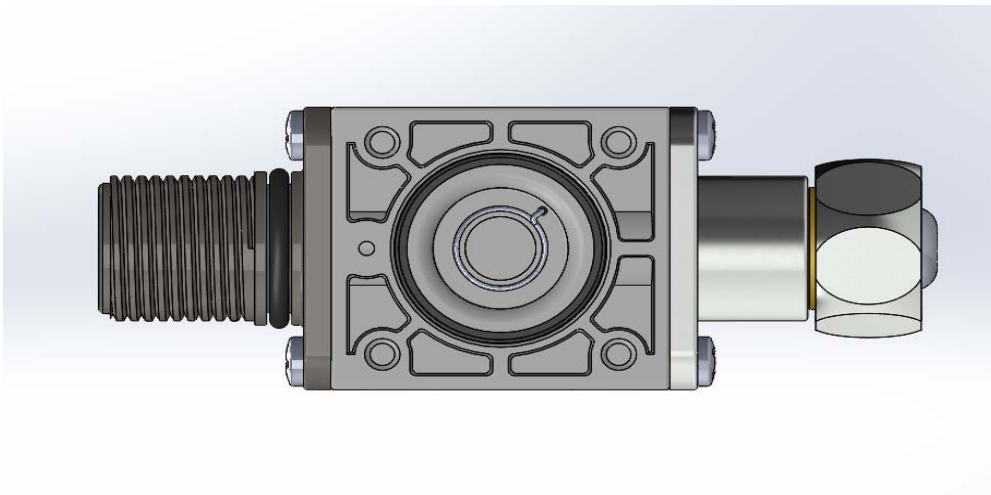
取出彈簧及膜片組



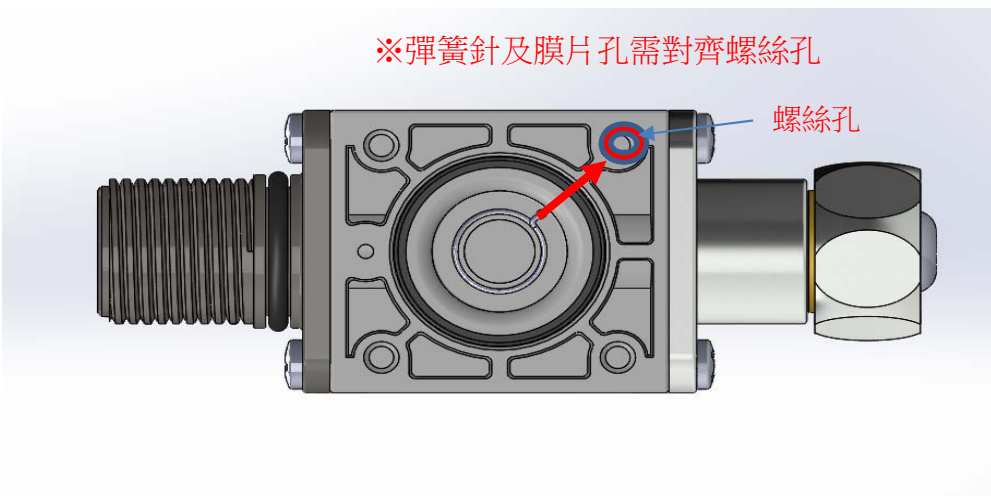
清潔膜片組或更新



清潔閥體內部

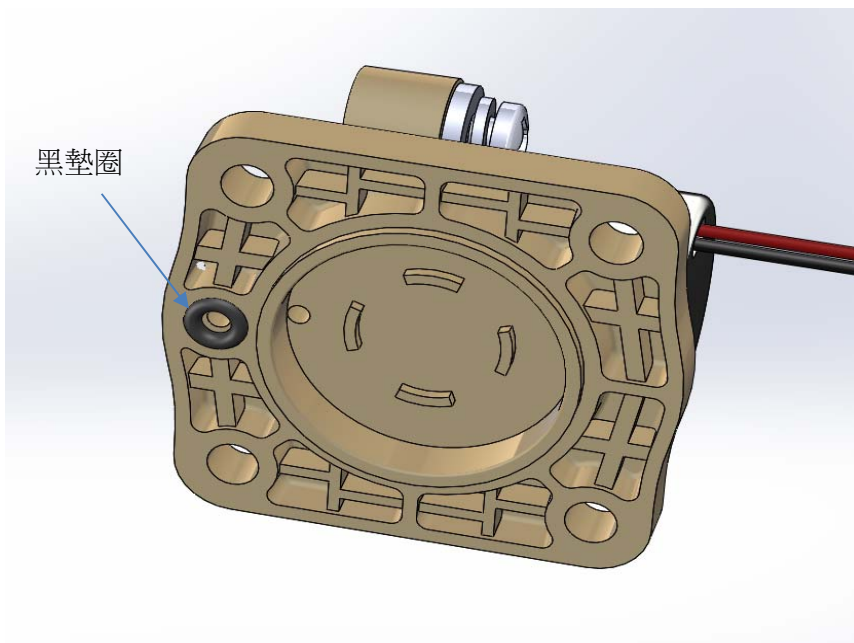


放回膜片及彈簧  
(注意方向性)



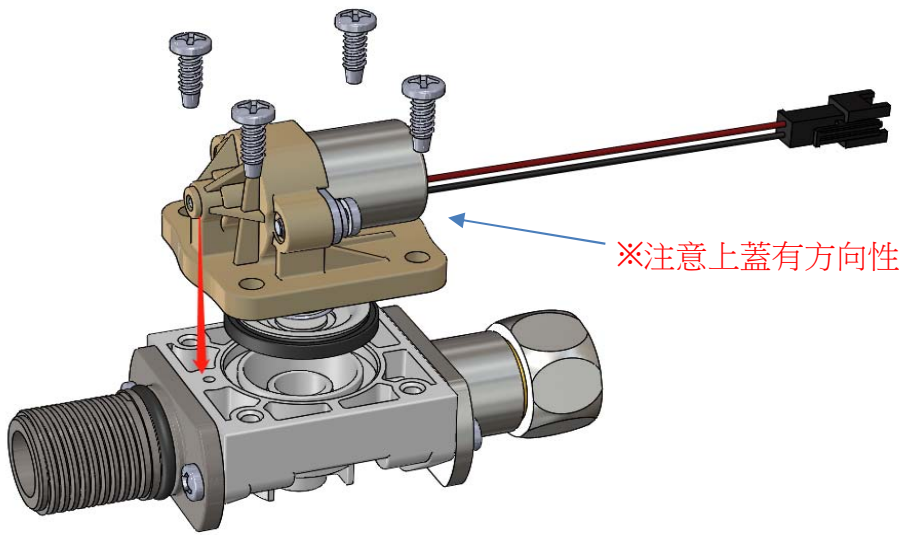
※彈簧針及膜片孔需對齊螺絲孔

螺絲孔

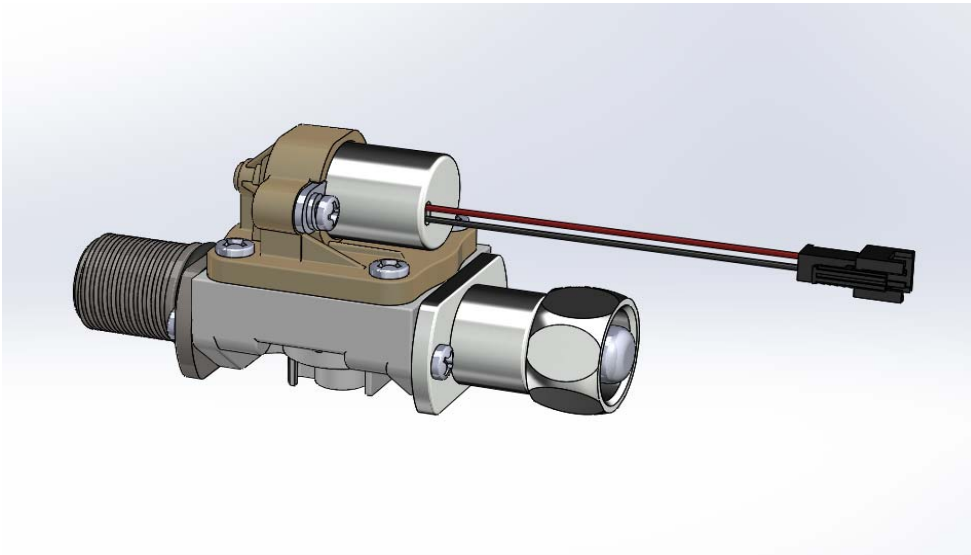


黑墊圈

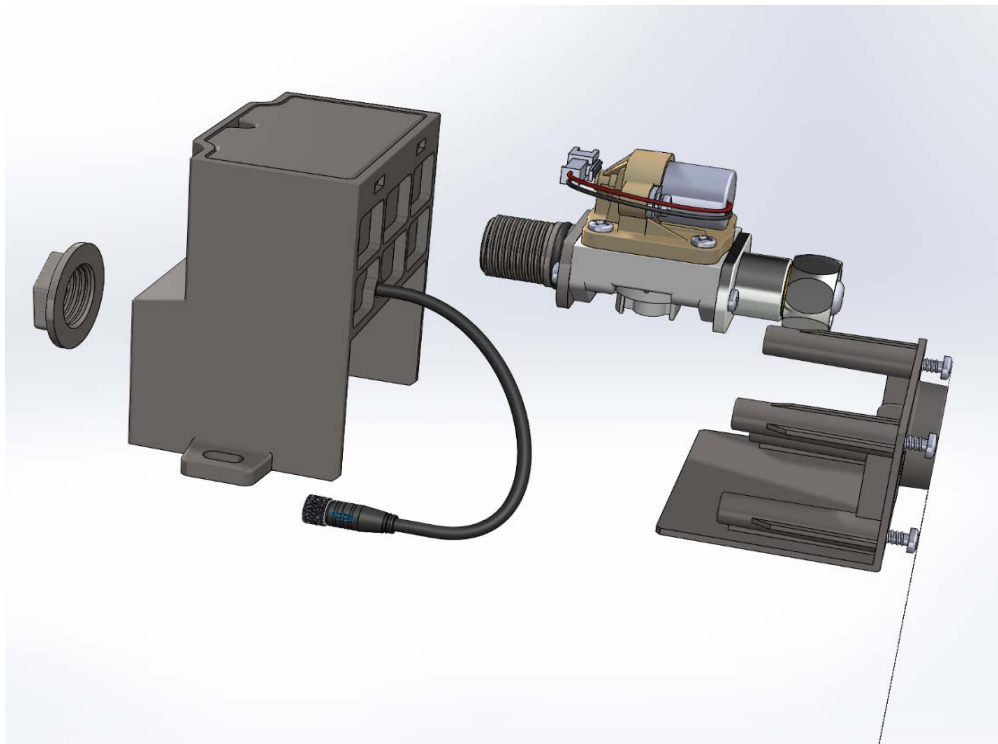
※先檢查上蓋內黑墊圈



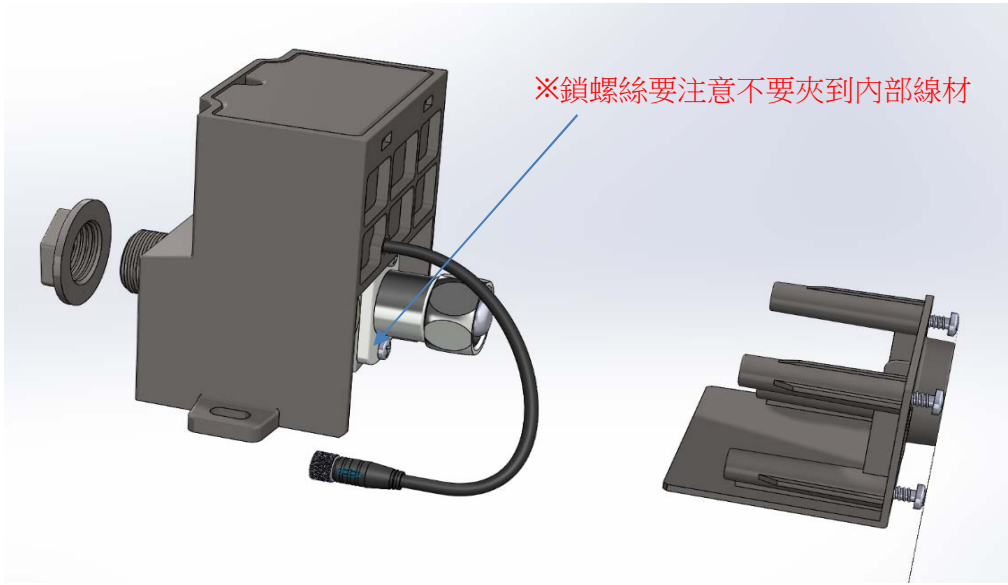
將上蓋依圖示鎖回閥本體



電磁閥組裝完成



依反程序將電磁閥組裝於盒內



組裝完成